



GS-100C+

Entry Level UAV LiDAR Scanning System GS-100C+
Color Point Cloud with Highly Integrated Camera



Geosun

Wuhan Geosun Navigation Technology Co.,Ltd

Wuhan Geosun Navigation Technology Co.,Ltd

Web: www.geosunlidar.com

Cellphone/WhatsApp: +86 15527360208

Email: sales@geosunlidar.com

Address: 4F, Building D, Maker plaza No.8 West Maodianshan Road, East Lake Hi-tech Zone Wuhan City, China

GS-100C+

Entry Level UAV LiDAR Scanning System GS-100C+
Color Point Cloud with Highly Integrated Camera

**Highly
Integrated**

**High
Precision**

**450m
Ranging**

**Multi
Platforms**

**High
Efficiency**

**Easy
Operation**

GS-100C+ LiDAR scanning system is a UAV measurement system independently developed by Geosun company. It highly integrates laser scanner, GNSS satellite positioning system, INS inertial navigation system and camera, and can quickly obtain high-precision laser point cloud number. It can be widely used in Digital city construction, Industry, Land survey, Forestry and Agriculture

System Parameter

Accuracy	≤10cm@110m
Weight	1020g
Working Temperature	-20 deg C. to 55 deg C.
Dimension	15.5*9.2*9.3cm
Storage	64 GB Max support 128GB TF card
Carrying Platform	Multi Rotor/VTOL

Laser Unit

Measuring Range	450m@80%
Laser Class	905nm Class1 (IEC 60825-1:2014)
Laser Line Number	Equivalent to 64-beam
IP Rating	IP 67 as mentioned by Livox
FOV	70.4° the circular view
Range Accuracy (1σ @ 20m)	2 cm
Data	Triple echo,720,000 Points/Sec

POS Unit

Update Frequency	200HZ
Pitch /Roll Accuracy	0.015°
Heading Accuracy	0.040°
Position Accuracy	≤0.05m
GNSS Signal Type	GPS L1/L2/L5, GLONASS L1/L2 BDS B1/B2/B3, GAL E1/E5a/E5b



GS-100C+

Entry Level UAV LiDAR Scanning System GS-100C+
Color Point Cloud with Highly Integrated Camera

Pre-Processing Software

POS(Trajectory) Software	Shuttle
Point Cloud Software	gAirHawk

Camera

FOV	83°
Resolution Pixel	26 MP
Focal Length (mm)	16

Operation Efficiency Table

Flight Height (m)	Accuracy	Single Flight Operation(km2)
50	≤5cm	0.88
70	≤7cm	1.28
110	≤10cm	1.92

Mission Planning Software (optional)

Mission Planning Software	Customized Rute Planning Software – WayPoint Master
---------------------------	---

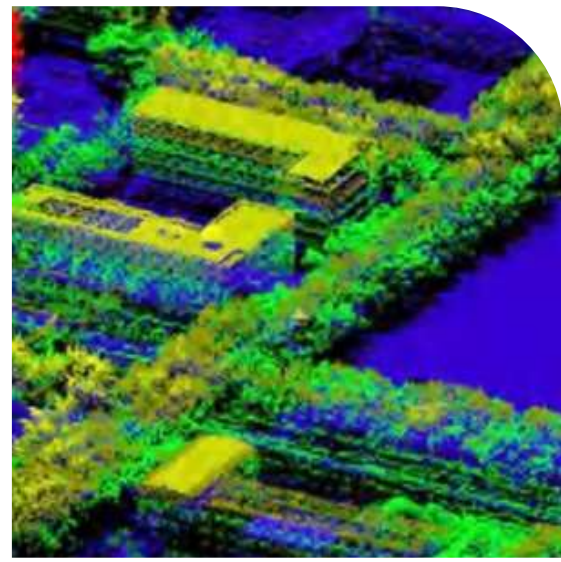
Application case



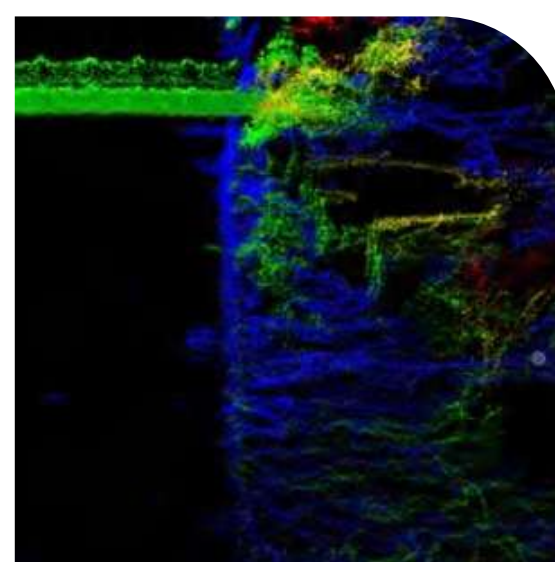
Model:GS-100C
Flight speed: 10m / s
Flight altitude: 80m
Application: Urban Construction Project
location:Malaysia



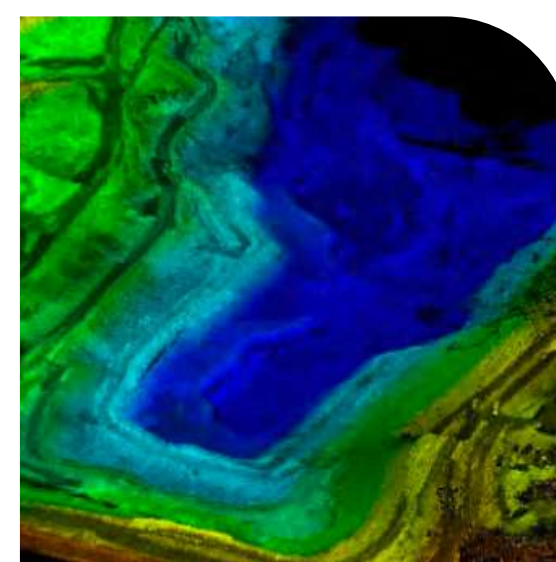
Color point Cloud



Smart city construction



Water conservancy industry



Mine Survey